

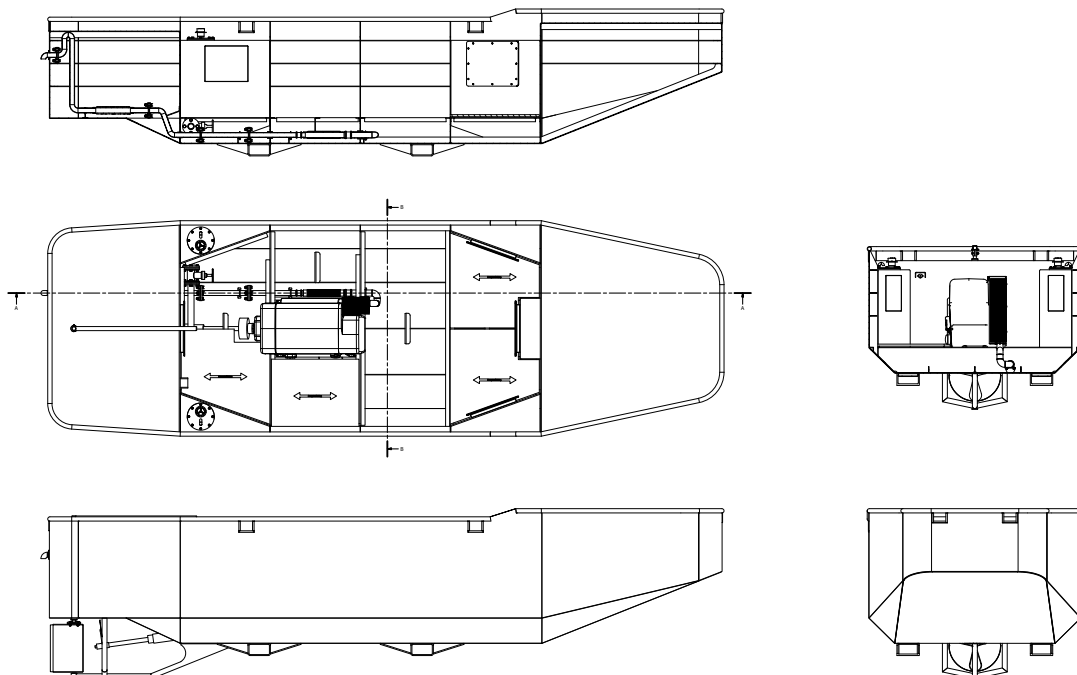
# FACTSHEET - WVL 660 / WB660

## Characteristics



### WB 660 (Work boat)

LENGTH	6,00 meters	ENGINE	Hatz (aircooled)
WIDTH	2,30 meters	TYPE	4L41C 1800rpm
SIDE DEPTH	1,50 meters	MAIN ENGINES	1X 50 hp
DRAFT	0,6 meters	SPEED	5 kn
WEIGHT	2.200 kg	BOLLARD PULL	1 ton





**Modular Pontoon Systems BV**

Veerdam 1  
5308 JH Aalst (GLD)  
The Netherlands

**Tel.:** +31 (0)418 - 67 80 86

**Website:** [www.mpsbv.com](http://www.mpsbv.com)

**E-mail:** [info@mpsbv.com](mailto:info@mpsbv.com)

## FACTSHEET - MEC 1205

### Characteristics Modular Euro Carrier

