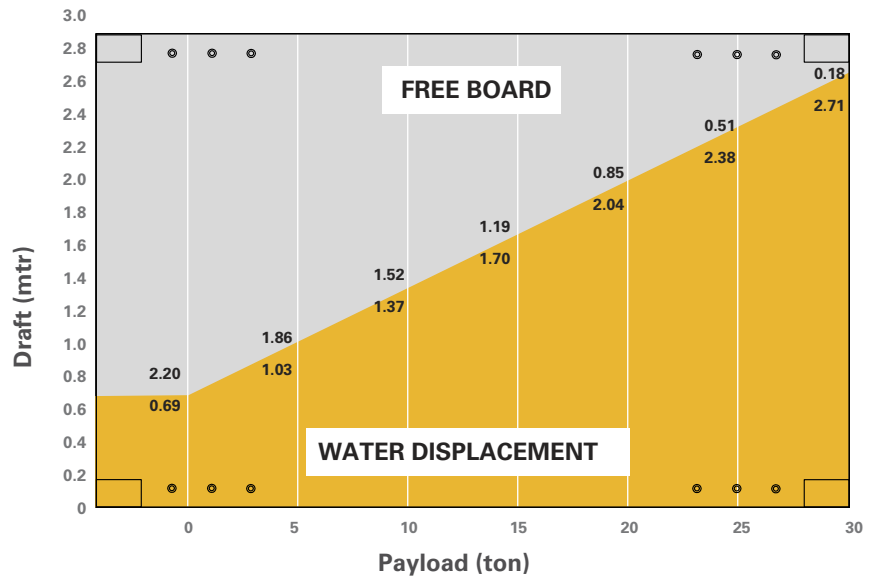


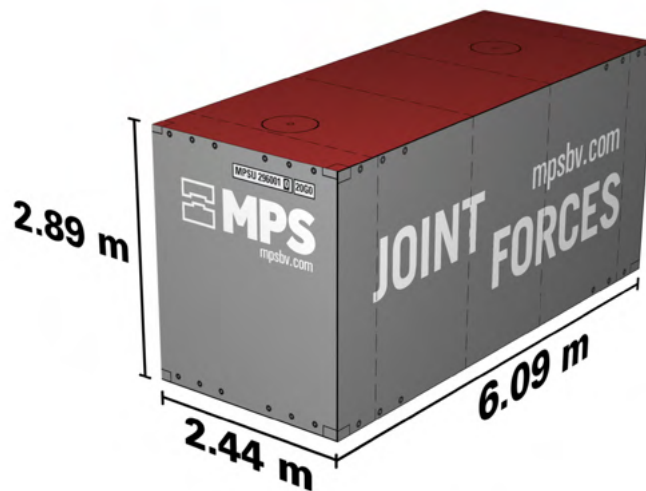
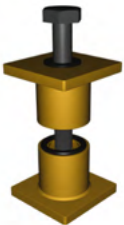
FACTSHEET - MPS - 295

Characteristics 20 ft x 9.5 ft container pontoon

Length O.A.	6.09m (20ft)
Breadth O.A.	2.44 m (8ft)
Depth	2.89 m (9.5ft)
Weight	10.3 ton
Deck thickness	10 mm
Watertight bulkhead 1	
Compartments 2	
Manholes 2	
Deckload 8.0 t/m ²	
T (draught) empty 0.69 m	
T (draught) Max. 2.46 m	
Load cap at t Max. 26.3 ton	
Class society Bureau Veritas	
Class Notation Inland waters	
Sheltered area	
Coastal area	



TEKLOCK®



TRANSPORT OPTIONS



BY ROAD



BY SEA



BY RAIL

MPSU 295001 0 20G0

CSC APPROVAL
 CERTIFICATE

CSC SAFETY APPROVAL			
APPROVAL REFERENCE			
DATE MANUFACTURED			
IDENTIFICATION No.			
MAXIMUM OPERATING GROSS MASS	kg		lbs
ALLOWABLE STACKING LOAD FOR 1.8 g	kg		lbs
TRANSVERSE RACKING TEST FORCE	newtons		
END WALL STRENGTH	NIL		lbs
SIDE WALL STRENGTH	NIL		lbs
NEXT EXAMINATION DATE			