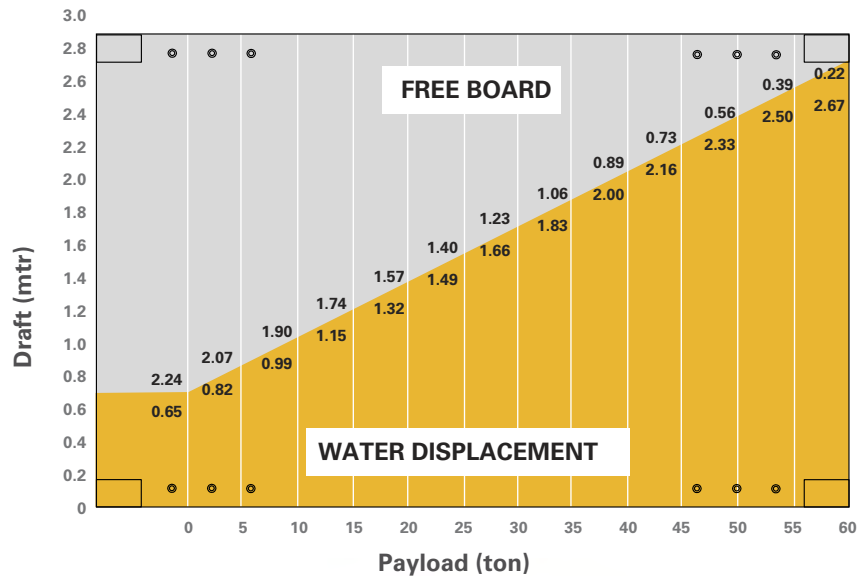


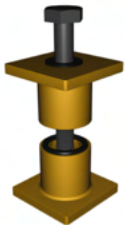
# FACTSHEET - MPS - 495

## Characteristics 40 ft x 9.5 ft container pontoon

Length O.A.	12.19m (40ft)
Breadth O.A.	2.44 m (8ft)
Depth	2.89 m (9.5ft)
Weight	19.3 ton
Deck thickness	10 mm
<b>Watertight bulkhead</b> 2	
<b>Compartments</b> 3	
<b>Manholes</b> 3	
<b>Deckload</b> 8 t/m <sup>2</sup>	
<b>T (draught) empty</b> 0.65 m	
<b>T (draught) Max.</b> 2.46	
<b>Load cap at t Max.</b> 53.8 ton	
<b>Class society</b> Bureau Veritas	
<b>Class Notation</b> Inland waters	
Sheltered area	
Coastal area	



TEKLOCK®



### TRANSPORT OPTIONS



BY ROAD



BY SEA



BY RAIL



BY AIR

**MPSU 495001 0 40G0**

CSC APPROVAL CERTIFICATE

CSC SAFETY APPROVAL			
APPROVAL REFERENCE			
DATE MANUFACTURED			
IDENTIFICATION No.			
MAXIMUM OPERATING GROSS MASS	kg		lbs
ALLOWABLE STACKING LOAD FOR 1.8 g	kg		lbs
TRANSVERSE RACKING TEST FORCE	newtons		
END WALL STRENGTH	NIL		lbs
SIDE WALL STRENGTH	NIL		lbs
NEXT EXAMINATION DATE			